

Quick Guide PC SOFTWARE DAQ Manager

- Version: **1.10.0** or higher
- Designed for MultiCon data recorders



Read the user manual carefully before starting to use the software.
Producer reserves the right to implement changes without prior notice.

CONTENTS

1. GENERAL CHARACTERISTICS.....	4
2. FIRST LAUNCH OF THE APPLICATION.....	4
3. DATA IMPORTING FROM A FLASH DRIVE.....	5
3.1. Selection of data directory.....	5
3.2. Data importing.....	5
4. DATA DOWNLOADING FROM A NETWORK.....	6
4.1. Configuring network settings.....	6
4.2. Getting information about the remote device.....	7
4.3. Manual data downloading.....	8
4.4. Automatic data downloading.....	10
5. DEVICE SETTINGS.....	10
5.1. Devices.....	11
5.2. Groups.....	11
5.3. Logs.....	12
5.3.1. Graph settings.....	13
5.4. Channels.....	14
6. PROGRAM SETTINGS.....	14
6.1. "Application" tab.....	14
6.2. "Display" tab.....	15
6.3. "Ethernet" tab.....	20
6.4. "Current Measurements" tab.....	20
6.5. "Printout" tab.....	20
7. BROWSING LOGS.....	21
7.1. Readiness of logs for analysis.....	21
7.2. Searching a logs.....	23
7.3. Selection of time range.....	24
7.4. Automatic report refresh.....	26
7.5. The table.....	26
7.5.1. General information.....	26
7.5.2. Synchronization with the graph.....	28
7.6. The graph.....	28
7.6.1. The legend.....	29
7.6.2. Scaling and moving.....	30
7.6.3. Synchronization with the table.....	31
7.6.4. Transfer to other programs.....	31
8. CREATING REPORTS.....	32
8.1. Printing the table.....	32
8.2. Printing the graph.....	32
9. ANNOTATING GRAPHS.....	33
9.1. Creating notes.....	34
9.2. Creating types of notes.....	35
9.3. Edit and delete notes.....	35
10. REFERENCES.....	36
10.1. General Information.....	36
10.2. Creating references.....	36
10.3. List of references.....	38
10.4. Comparing Graphs.....	38
11. CURRENT MEASUREMENTS.....	40
11.1. The table.....	40
11.2. Sidgets.....	41
11.2.1. Access to the sidget web pages from the software.....	42

Explanation of symbols used in the manual:



This symbol denotes especially important characteristics of the software operation. Read any information regarding this symbol carefully.



This symbol indicates additional information that may help operate the program.

1. GENERAL CHARACTERISTICS

DAQ Manager software allows you to download data recorded by the MultiCon devices (e.g. temperature, humidity, pressure) and visualize them as tables and graphs. Data transfer is performed using a portable USB Flash Drive or via an Ethernet network.

2. FIRST LAUNCH OF THE APPLICATION

After completing the installation process, start the application from the system *Start Menu* in the folder "DAQ Manager". From this folder you can safely uninstall the program and the measurement data archived up to the time of uninstalling will remain on your hard disk for later use.

After first launching of the program, the window shown will look like 2.1.

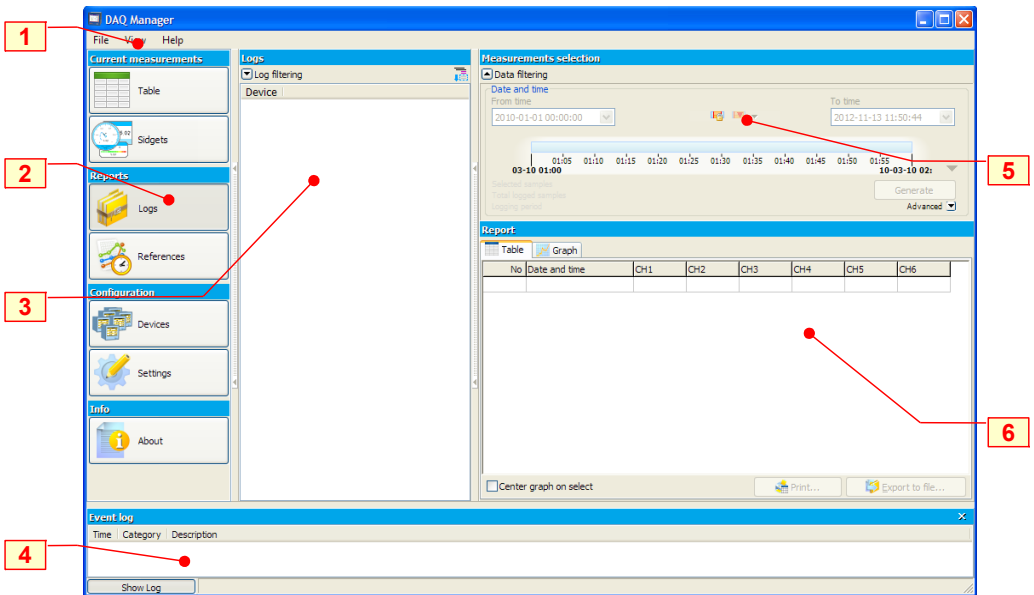


Figure 2.1. The appearance of the interface on the first run

Explanation of elements in the figure above:

- 1 - **Main Menu** - provides access to less frequently used functions of the program;
- 2 - **Side Menu** - allows access to the main functions of the program;
- 3 - **Devices List** - contains a list of devices for which the program has archived data or virtual devices created for communication via Ethernet;
- 4 - **Event Messages Area** – list events occurring in the program; Information that appears here is also saved to a file "EventLog.txt", which is located in the program directory.

- 5 - **Time Area** – select the time period to create a table or graph;
- 6 - **Report Area** – view selected data in table and graph form;
Displayed measurement data can be printed or exported to *.csv file.

When you run the program for the first time, the **Devices List** is empty because the program doesn't have any information about devices and their data yet. The creation of a new device on the list is done automatically by importing logged data saved on portable flash memory. To add a new device you only need to import its logged data. It is possible to add a new device manually, which will give the possibility to import data directly from the Ethernet network (see section 4).

3. DATA IMPORTING FROM A FLASH DRIVE

The user can import measurement data, saved by the data logger on a portable flash drive, to the software database using menu **[File] > [Import measurements...]**. If a flash drive is inserted into USB port while running the program, **DAQ Manager** will check its contents and if any measurement data is found, a window is displayed to select the directory to get the new data.

3.1. SELECTION OF DATA DIRECTORY

The "Browse for Folder" window allows you to choose the folder of one device (with the name of the specific data logger serial number). Selecting the proper directory will activate the **[Import]** button (3.1). Clicking on this button will start the process of importing data to the program database.

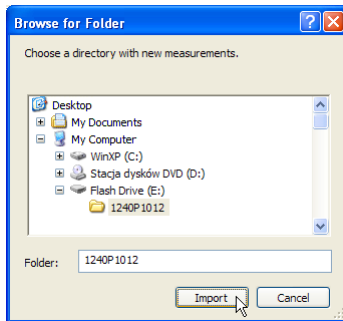


Figure 3.1. "Browse for Folder" window

3.2. DATA IMPORTING

At the beginning of the process of importing data the program analyses the measurement data for changes. After that, software performs importing if it's needed. The user is informed about progress of operation via a dialogue box, and should wait until the end of the process (when the **[Close]** button becomes active) as shown in 3.2.

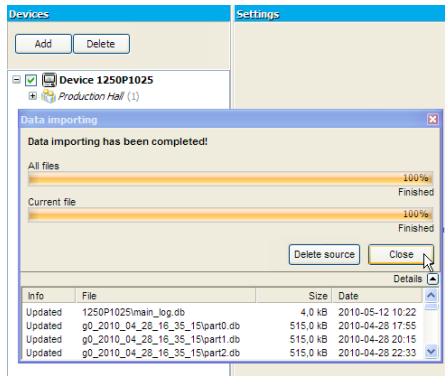


Figure 3.2. The process of data importing was completed

When the importing process was successfully completed a new device called “Device SERIAL_NO” (where SERIAL_NO is the serial number of the device from which data were collected) appears in the **Devices List**.

4. DATA DOWNLOADING FROM A NETWORK

In addition to importing data from a flash drive, you can also download logged files via an Ethernet network. This possibility exists only if the data logger is equipped with a communication module with an RJ-45 socket (ACM or ETU module).

4.1. CONFIGURING NETWORK SETTINGS

To download the measurement data and settings from a device, connected to the Ethernet network, you must add a new undefined one to the list, by going to the **[Devices]** button (see section 5). Then click **[Add]** button. A device added to the list in this way is a virtual device; its serial number is undetermined yet (4.1).

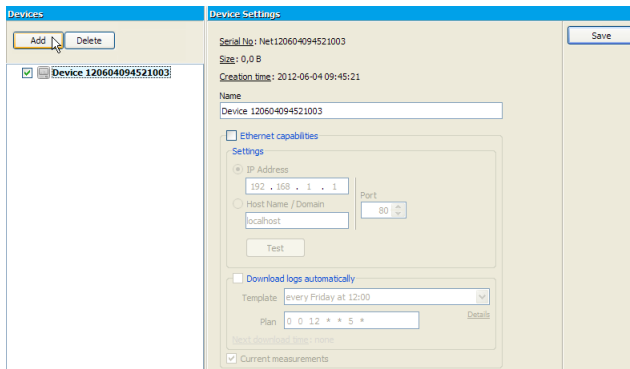


Figure 4.1. Adding the new virtual device to the **Devices List**

This virtual device will be equivalent to the actual real device in Ethernet network when the user specifies its network settings. Please check the **Ethernet capabilities** option, specify the IP address of the real device in the Ethernet network and the correct port if the device is in a subnet and is using port forwarding. Direct communication works on port 80 (http). If the network is managed by a DNS server that specifies assigned IP address to a domain name (or host), then you can choose to access the device by this name, as an alternative to an IP address. This functionality is especially useful if you want to use dynamic allocation of IP addresses with the DHCP option enabled in the device. After setting the network settings, you can immediately test it to see whether the device responds. Please click on the **[Test]** button and read the message at the right side of it (4.2).

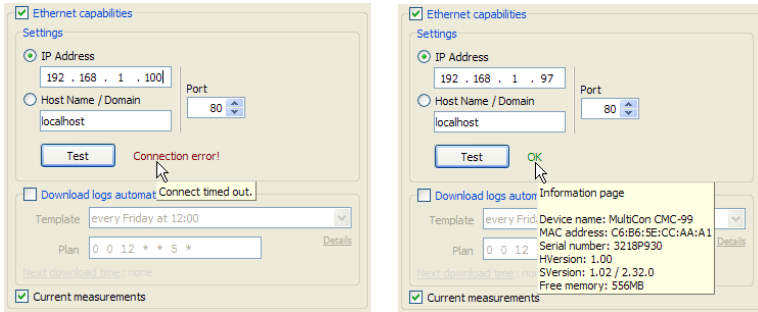


Figure 4.2. Example of network settings for a device that does not exist in the network (on the left) and correctly configured (on the right)

If the device responds correctly, you should save these settings by clicking on the **[Save]** button.

4.2. GETTING INFORMATION ABOUT THE REMOTE DEVICE

For basic information about the remote device, go to the **Reports** section and select **[Device Information]** from the context menu of the selected device. If the command is carried out on a virtual device and the communication will successful, it will be converted to a device associated with the specified serial number. Then a window will appear with information about the remote device (4.3).

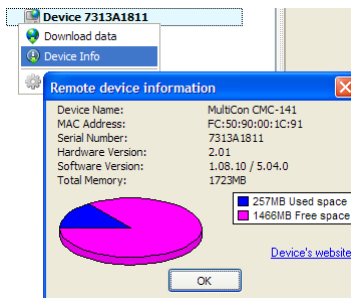


Figure 4.3. Remote device information

From the level of the above window, the user can easily open the device's web page in the browser, which provides some options for managing it, such as access to a remote screen, uploading configuration, deleting logs etc. For more information about the device's website, please refer to the MultiCon data logger user manual.

4.3. MANUAL DATA DOWNLOADING

To download data from the preconfigured virtual device, go to the **Reports** section, right click on the appropriate device and select the **[Download data]** command (4.4).

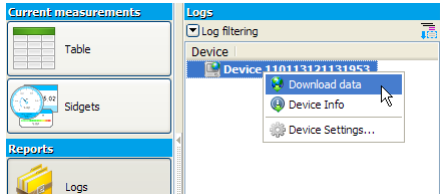


Figure 4.4. Starting download data

If the command is carried out on a virtual device and communication is successful, it will be converted to a device associated with the specified serial number. From now on, an attempt to download data from another device, e.g. after changing the IP address in the program, will end with the message "Incompatible device!" Then the program will download from the device a list of all logs and show a dialog to make the user choose which ones should be imported (4.5).

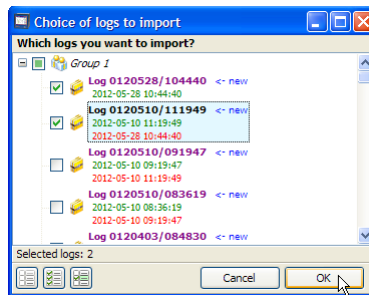


Figure 4.5. Choice of logs to download

Logs tagged "new" don't exist in the program or may require an update. The **[Suggest choice]** button selects logs marked with this tag. After making your selection, click **[OK]** button. This will start the process of downloading the data in the form of logs and configuration of the device, logged groups and channels. The progress of this operation is located next to the device on the list. By clicking on the progress bar, you can view details of this process (4.6). If **DAQ Manager** has previously downloaded data for the selected device, then the update will be made without re-downloading all logs. If during the downloading, the program detects any errors, the user will be informed by an appropriate entry in the **Event Messages Area** (see Chapter 2).

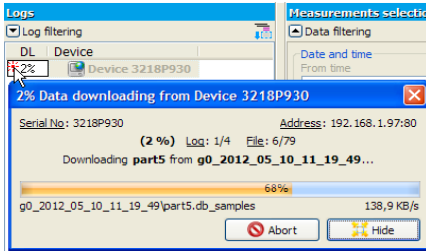


Figure 4.6. Downloading data from an Ethernet network

After completion of the download process, you can choose imported logs, and then analyse the data and create reports (4.7).

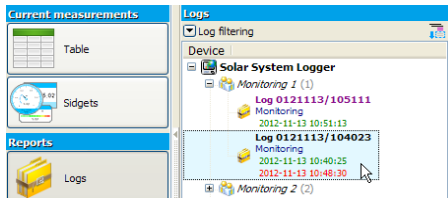


Figure 4.7. Updated logs ready for analysis

4.4. AUTOMATIC DATA DOWNLOADING

The program has a built-in automatic data downloading function according to a set schedule. When user uses this option, he hasn't a choice which logs will be imported, and the program automatically download all data that haven't been imported or require an update. Automatic data downloading function can be activated for each device. To do this, go to settings by the [Devices] button (see section 5), select preferred device in the list and check the "Download logs automatically" option. For user's convenience the program has a several templates of schedules of automatic data downloading. Each template defines the plan for start a mechanism of logs downloading (4.8).

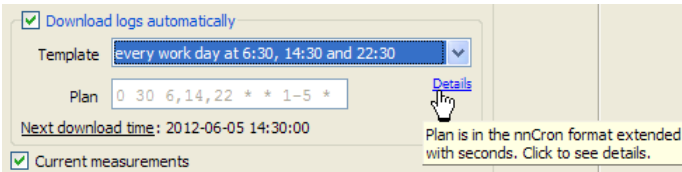


Figure 4.8. Settings of automatic data downloading

If there isn't predefined template that match user's requirements, the plan can be defined individually. To do this, select the "(custom plan)" template and set own schedule using the Plan field. Notation of the plan is similar to the nnCron format, with the main difference that has extra space for seconds. Details about how to write the schedule in this format can be found at <http://www.nncron.ru/help/EN/working/cron-format.htm>. Any change in the plan updates the information about the next time of download, which allows user to verify the correctness of the schedule.

After define the plan and save settings, user can do other things or minimize the program and when the time set in the schedule will occur, the program will start downloading data process.



Is not recommended to set the time of downloading data too often, because that will unnecessarily load the device. Continuous downloading, converting and importing of the data also cause a much load of the program, which slows down other operations. Memory of the device is enough to register measurements for at least several days with configuration of device which generates the largest filling data.

5. DEVICE SETTINGS

Access to the settings of devices from which data was collected, their groups, logs and channels can be obtained by clicking on the [Devices] button in the **Side Menu**. Certain settings that relate to the displaying and visualization of data, previously set in the device, can be changed here, to allow for more intuitive reports. After making changes, the user must confirm it by clicking the [Save] button. The button [Undo] is used to restore the last saved settings when an unexpected change happens.

5.1. DEVICES

The number of devices on the list is unlimited. After selecting one device, the program displays its properties (serial number, date and time when it was added to the database and disk space occupied by all its data). The user can change the default name of the device and define the Ethernet Network settings (5.1).

The screenshot shows two windows from the DAQ Manager software. The 'Devices' window on the left has a list with one entry: 'Device 3218P930', which is checked. Above the list are 'Add' and 'Delete' buttons. The 'Device Settings' window on the right displays the following information:

- Serial No.: 3218P930
- Size: 304,8 MB
- Creation time: 2012-06-04 09:45:21
- Name: Device 3218P930
- Ethernet capabilities
 - Settings
 - IP Address: 192 . 168 . 1 . 97
 - Host Name / Domain: localhost
 - Port: 80
 - Test button
 - Download logs automatically
 - Template: every Friday at 12:00
 - Plan: 0 0 12 * * S *
 - Details button
- Current measurements

Figure 5.1. Device settings

For convenience (e.g. to make the list more readable) each device can be hidden from the list of devices in the **Reports** and **Current measurements** sections by unchecking it on this list.

The user can also permanently remove the device from the database by selecting a device and clicking the **[Delete]** button. This operation can also permanently delete all the data related to the selected device, so it is strongly recommended to be very careful while performing this operation because there is no possibility to recover deleted data. To prevent against accidental data deleting, the software asks the user if all data related to device being removed should also be deleted from the hard drive.



The folder with databases that contain imported data is in the installation directory of the program (see section 6.1 “Application” tab). User should take care to backup its contents regularly.

5.2. GROUPS

Each device can have up to 10 groups (depending on the settings of data logger). For each group the user can specify the name and description (5.2). It is recommended to use groups names similar to names of corresponding groups in MultiCon devices.

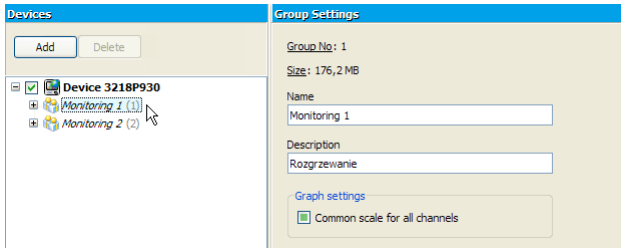


Figure 5.2. Group settings

The **Common scale for all channels** setting is used to force the method of displaying the scale on the graph for creating reports as shown in the table below.

Setting	Description
<input checked="" type="checkbox"/> (default)	Individually: Displaying a common scale setting will correspond individually for each log setting (see section 5.3).
<input type="checkbox"/>	Turned Off: The common scale for logged channels will be disabled. Each channel will have an independent scale in the graph. Individual settings for each log will not be accepted.
<input checked="" type="checkbox"/>	Turned On: The common scale for logged channels will be displayed for each log that belongs to this group. Individual settings for each log will not be accepted.

5.3. LOGS

After expanding one of the groups, a list of logs appears (5.3). Their number is unlimited and depends on how often you change parameters in the data logger device, which causes the creation of a new log, and also on maximum size of single log allowed by the MultiCon device. The name of the log contains the date of its creation and completion. Parameters of each log are for information purposes only. Settings of the graph and a description of the log can be customized.

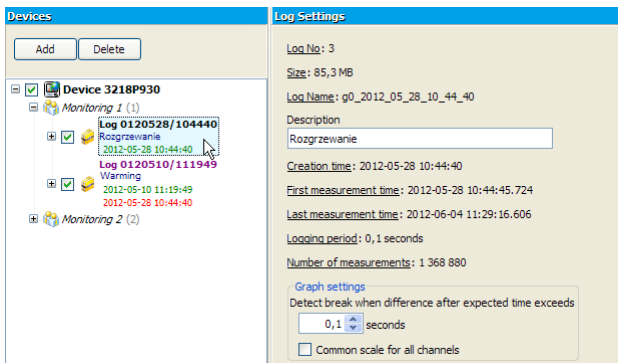
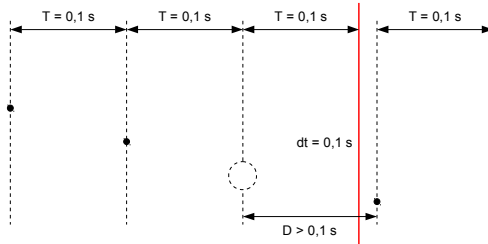


Figure 5.3. Log settings

5.3.1. Graph settings

Detect break when difference after expected time exceeds field allows to define a minimal difference in logged samples and when this difference will be exceeded, the program will classified it as a break in logging (5.4). There is no possibility to set this parameter on value which is smaller than logging period.



where:

T – logging period,

D – detected delay in sample logging, which depends on value defined by user,

dt – logging break which will be visible on graph,

Figure 5.4. Break calculation in sample logging

Causes of logging breaks can be as follows:

- switching off the device (regardless of the cause),
- stopping logging when it was triggered form logical channel,
- filling the memory of the device,
- overloading the device (e.g. when user is trying to register to much samples per second),
- starting logging in few Groups at the same time,
- others,

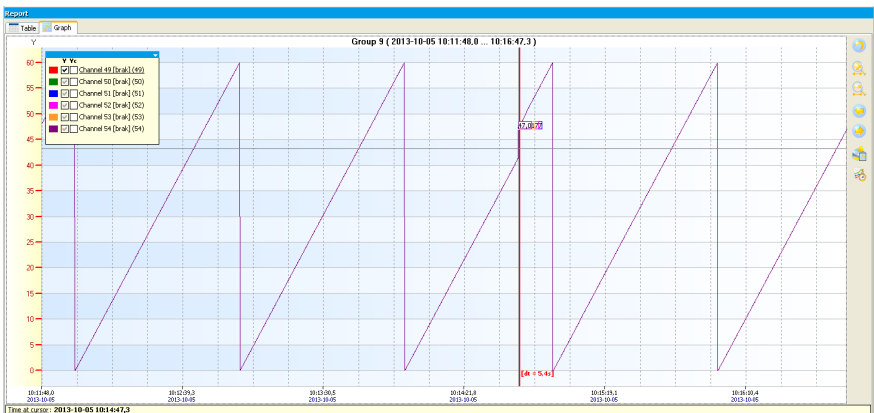




Figure 5.5. Example of logging sample break

The **Common scale for all channels** setting is used to set the method of displaying the scale on the graph for creating reports as shown in the table below.

Setting	Description
 (default)	Turned Off: The common scale for logged channels will be disabled. Each channel will have an independent scale in the graph.
	Turned On: Logged channel values will be rescaled to a common scale of all displayed channels. Activating this option is useful when values of several channels are similar.

5.4. CHANNELS

After expanding any log, a list of logged channels is shown (5.6). The user can specify multiple settings that affect the format of the data which is displayed in reports.

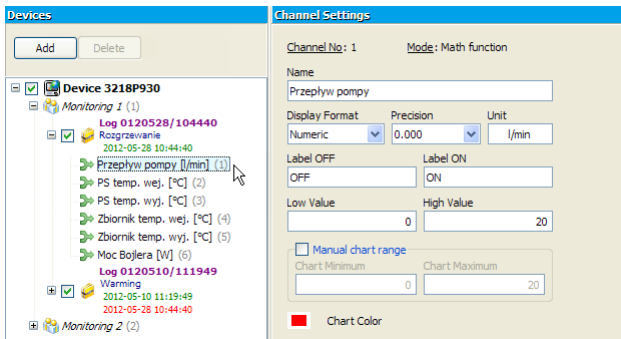


Figure 5.6. Channel settings

6. PROGRAM SETTINGS

Access to the program settings can be reached by clicking on the **[Settings]** button in the **Side Menu**.

6.1. "APPLICATION" TAB

Here are the general settings of the program. The user can check the location of the data stored on his hard drive under **Bases directory**. The program allows the user to change the default location of the databases. If in the new location the databases don't exist, the program creates empty prepared to add the new data.



Although it is possible to choose a network location, this solution is not recommended due a slow startup of the program and slower operations. Additionally, the user should make sure that the shared folder doesn't use by multiple users at the same time

In the above tab, the user can also set the interface language, and with the parameter **Number of closed logs to cache**, can specify the number of closed logs in each device group, the details of this logs will be loaded into the operational memory during the program

startup (6.1).

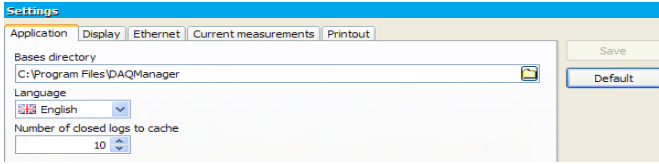


Figure 6.1. Program settings – **Application** tab

A detailed description of the operation of the above parameter can be found in section 7.1 Readiness of logs for analysis

6.2. “DISPLAY” TAB

Settings located on this tab are responsible for how data are retrieved from the archive and for its presentation (6.2). Due to the large amount of data, user can set some limitations, which will shorten the waiting time to generate the report and reduce RAM usage.

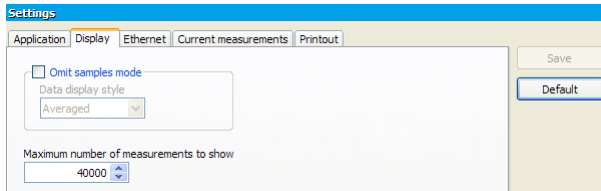


Figure 6.2. Program settings – **Display** tab

Enabling **Omit samples mode** option will cause that if during the process of creating a report the user selects the time range which contains larger amount of measurements than specified in **Maximum number of measurements to show** parameter, the program skips appropriate number of samples in a way that the total number of displayed samples will not exceed the limit. Omitted samples are distributed evenly in entire of the time interval that user selected. Each displayed point can take real measured value corresponding to the time when it was registered or its value can be calculated including preceding omitted points. The method of display points can be chosen by selecting an option from the **Data display style** list.

Because in some situations there is need for frequent changing of this option, for example between creation of reports based on data coming from different groups or devices, quick access to it may be done from the **Time Area** (6.3) and may be change just before use the **[Generate]** button.

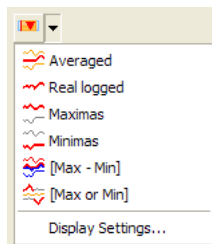


Figure 6.3. **Omit samples mode** options available from the **Time Area**

The following table describes all options of above parameter.








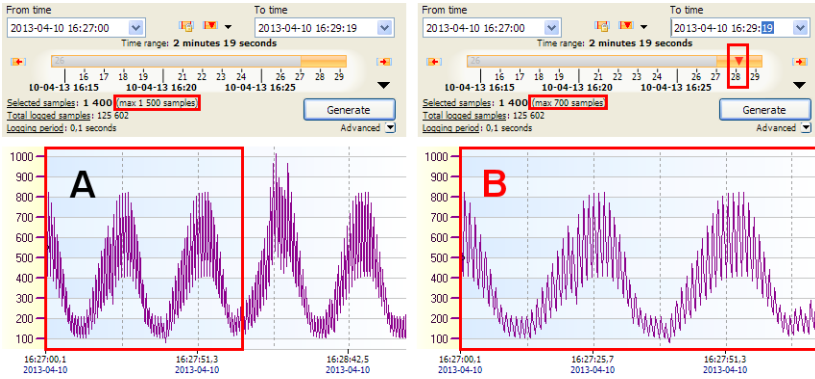
Setting	Description
	<p><u>Without omitting measurements</u>: When the Omit samples mode is inactive the Maximum number of measurements to show parameter applies limit on the amount of generated data. This mode displays the first n samples that don't exceed this limit (6.4). If the selected period of time includes greater number of samples than this limit allows, after using the [Generate] button on the time line should appear red arrow indicating the location of the last generated point.</p>
	<p><u>Averaged</u>: Activating this mode of omitting samples cause that the value of each displayed point will be calculated based on the arithmetic mean of preceded it omitted points (6.4.B).</p>
	<p><u>Real logged</u>: Activating this mode of omitting samples cause that each displayed point will have really measured value at the moment when it was recorded. Values of omitted points aren't included (6.4.C).</p>
	<p><u>Maximas</u>: Activating this mode of omitting samples cause that value of each displayed point will be equal to the maximum value of preceding omitted points (6.4.D).</p>
	<p><u>Minimas</u>: Activating this mode of omitting samples cause that value of each displayed point will be equal to the minimum value of preceding omitted points (6.4.E).</p>
	<p><u>[Max - Min]</u>: Activating this mode of omitting samples cause that value of each displayed point will be equal to the difference of maximum and minimum value of preceding omitted points (6.4.F).</p>
	<p><u>[Max or Min]</u>: Activating this mode of omitting samples cause that value of each displayed point will be equal to the maximum or minimum value of preceding omitted points. About this which one will be chosen, determines the greater distance from the arithmetic mean value of omitted points (6.4.G).</p>

Figure 6.4. Effect of reducing the number of displayed measurements on graphs when **Omit samples mode** is inactive:

A - all samples (1400 samples), **B** - limit without omitting (first 700 samples)



Data browsing when omit measurements mode is inactive allows viewing all recorded samples continuously, but displaying large amount of them is problematic. Operating by user on graphs which displays all 6 channels, where each contains 200.000 measurements (1.200.000 points on the graph) is uncomfortable, even using a fast PC. To ensure that the program will functioning smooth, the largest value of the **Maximum number of measurements to show** parameter can not be greater than 100.000. It is easy to calculate, that if the maximum sampling frequency is 0.1 second, there is no possibility to display periods longer than 2 hours, 46 minutes and 40 seconds on a single graph. Often such high recording frequency is used for fast changing waveforms that are of short duration, so this limitation is not a problem. For slow changing waveforms, for example when the recording period is set to 1 minute, this limitation allows to display data from a period of almost 10 weeks, which should be also sufficient. However, if the user would like to view the data of 1 week when sampling time is set to 0.1 second, he should use **Omit samples mode**. This mode allows to display required period of time, but some samples across the width will be ignored. Number of omitted samples depends on the **Maximum number of measurements to show** setting. The program automatically calculate locations of samples that should be displayed spaced from each other at equal distances. Values of omitted samples can be used to calculate displayed values.

In the 6.5 are shown various options to generate graphs depending on the **Data display style** when the **Omit samples mode** is active. Plots in green are as background for reference and can't be obtained directly from the **DAQ Manager**.

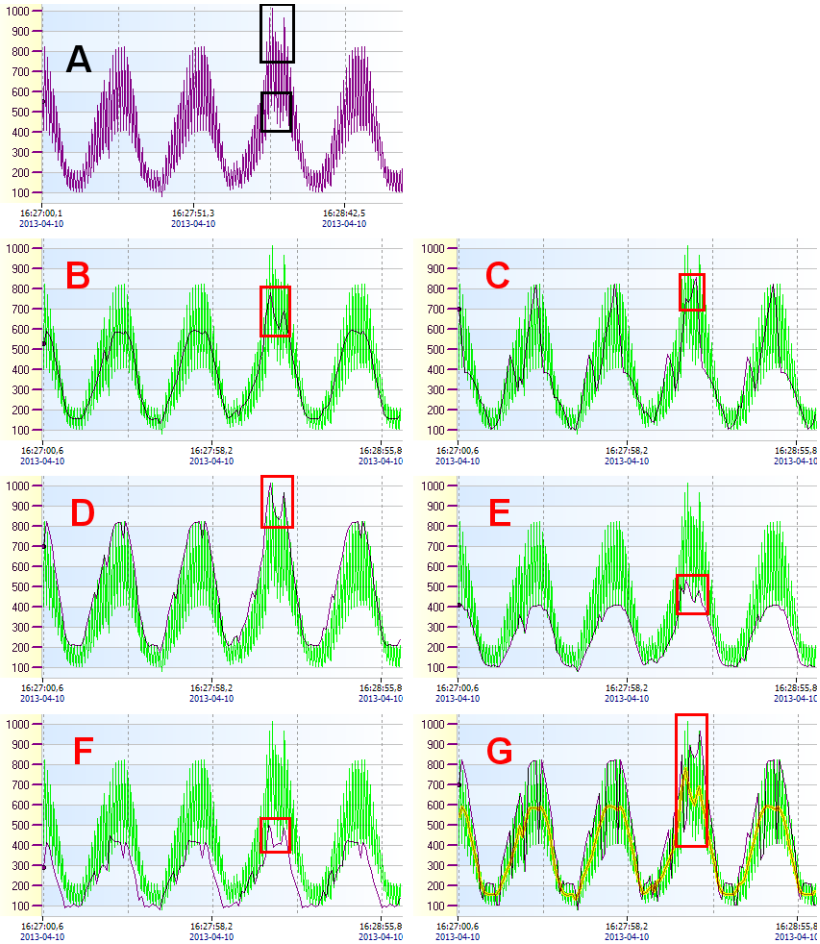


Figure 6.5. Display options of the graphs when **Omit samples mode** is active:

A - all samples (1400 samples), **B** - Averaged (140 samples), **C** - Real logged (140 samples), **D** - Maximas (140 samples), **E** - Minimas (140 samples), **F** - [Max - Min] (140 samples), **G** - [Max or Min] (140 samples)

The 6.5.A shows a graph where are shown all recorded samples over some period of time. The black frames marked waveform anomalies as two temporary increases and one temporary decrease of measure values that should be observed. To display this graph it is required to generate 1400 samples. If the limit set in the **Maximum number of measurements to show** doesn't allow this, then in the **Omit samples mode** some samples may be omitted, which may hide presented anomalies. Limiting the **Maximum number of measurements to show** to 140 will cause, that for each one sample, 9 will be omitted. If a temporary increase or decrease in value occurs at place of these 9 samples, this anomaly may be unnoticed. To neutralize this effect it is worth a closer look of each option of the **Omit samples mode**.

Choosing an **Averaged** option (6.5.B) will cause the existing anomalies are observed in

the graph in the form of characteristic two increases and one decrease in value. Real maximum and minimum values of these anomalies are not shown here. In addition, there is a minimal probability of occurrence some oppositely directed anomalies which the average value is close to the rest of the samples, so this cause hide these changes.

Choosing a **Real logged** option (6.5.C) can be useful for slowly changing values. It allows to draw a graph based on real measured and recorded values. It is also an alternative for **[Max or Min]** option, as in a random way allows to observe the direction of change the real value of the measured quantity, rather than jumps on the level of local extremes. Because this option doesn't consider omitted values, there is a risk unnoticed information about temporary value decreases and increases, as is the case in the above graph, where from 3 extremes in a significant way has been noticed only one.

Choosing a **Maximas** option will cause that out of occurring anomalies will be noticed both temporary increases in value (6.5.D). The value of displayed point is the largest of every 10 points. This option is useful for displaying measurement data of the process, for which a sudden increase could be harmful and should be observed.

Choosing a **Minimas** option will cause that out of occurring anomalies will be noticed one temporary decrease in value (6.5.E). The value of displayed point is the smallest of every 10 points. This option is useful for displaying measurement data of the process, for which a sudden decrease could be harmful and should be observed.

Choosing a **[Max - Min]** option will display span changes of recorded values for each 10 omitted points. This option allows to observe the rank of stability of the measurement for each group of omitted points. If recording was made with a sampling 0.1 second and set the maximum number of displayed measurements allows to display 1 for every 10 recorded samples, the value of each point of the graph allows evaluate how much has changed real values of measurements at every second. This option also allows to capture moments where out of each 10 measurements there are two opposed temporary changes in recorded values (two sudden increases in the graph **[Max - Min]**) (6.5.F).

Choosing a **[Max or Min]** option will display only the "most important" local extremes that occurred in the omitted samples. In this mode, the program will decide what value of largest or smallest is more distant from the average of omitted measurements. This option allows to find a situation where the option **Averaged** could not show the fact of occurrence local extremes by mutual elimination the values used to calculate the arithmetic mean. Here one of the local extreme is always displayed. This option provides a combination of options **Maximas** and **Minimas**, as it allows to show partially one or the second value (6.5.G).

6.3. “ETHERNET” TAB

Here we can find the default settings for the Ethernet devices (6.6), which are used for creating new virtual devices (see section 4.1).

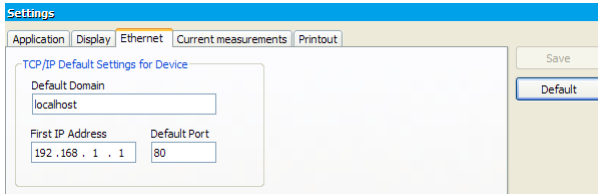


Figure 6.6. Program settings – *Ethernet* tab

6.4. “CURRENT MEASUREMENTS” TAB

These settings concern reading current measurements in real time (6.7). The period of polling devices can be freely adjusted in the range from 3 seconds to 24 hours. Setting 0 in this box will stop the automatic polling and then the current values are only available on request.

Additional description of the current measurement settings can be found in section 11.1

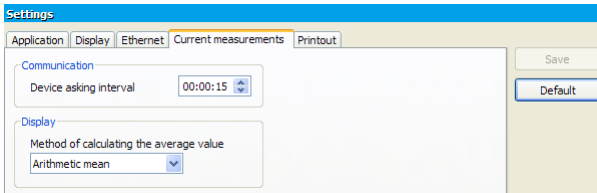


Figure 6.7. Program settings – *Current measurements* tab

6.5. “PRINTOUT” TAB

Under this tab we can find settings that affect how to create reports as printouts. Setting "First Page Banner" responsible for placing the user's graphic on the first page of each printout (6.8). This allows user to attach logotype, company data and other constants for each printouts. In creating a graphic bear in mind that it is not too small, because at the printing time it is scaled proportionally to the width of the page.

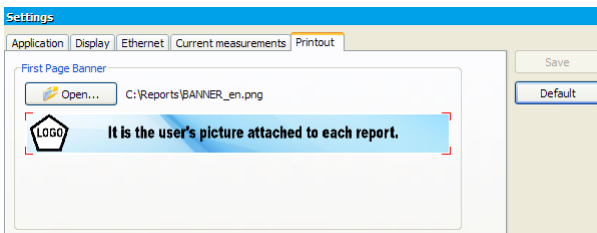


Figure 6.8. Program settings – *Printout* tab

Banner has fixed place on the printouts and its positions are shown in Figure 6.9.

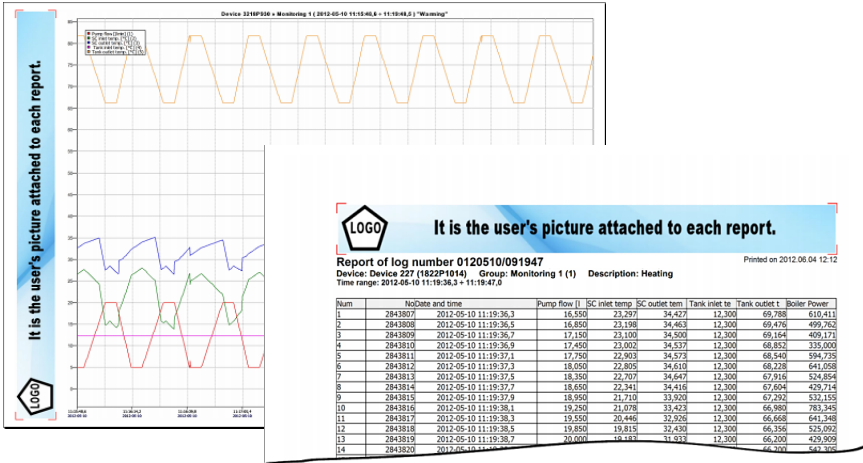


Figure 6.9. Sample printouts with attached user's banner

7. BROWSING LOGS

Based on measurement data collected from devices, **DAQ Manager** can generate a report as a table with all channels in the current log or in the form of graph to facilitate data analysis. Access to this data can be obtained from the **list of devices** available in the side menu [**Logs**].

7.1. READINESS OF LOGS FOR ANALYSIS

There are two types of logs on the list (7.1):

- highlighted in color - Immediately after starting the program, only the selected number of the latest, already closed logs, in each group, each device is cached, i.e. it has full information about their content. This number is determined by the parameter **Number of closed logs to cache**, which can be found in the "**Application**" tab in the **Program Settings** (see section 6.1). This parameter applies only to completed logs, because open logs, as the latest, are always cached, so that the program can automatically download new data. Increasing the value of this parameter will cause that access to more logs in the running program will become faster, however, each start of the program will take much longer, where the waiting time for its launch can increase powerfully as a function of the number of cached logs;
- grayed out - These are logs for which the program did not load full information. This is due to the fact that the program is optimized for faster startup and management of large amounts of data. Grayed-out, uncached logs may e.g. not display their description, which the user has set in the device, which is however completed during the first cached of such logs. In addition, displaying the recorded data from uncached logs usually takes a little longer time, however, just selecting such logs already causes caching, which will be valid for this logs until the user restart the program.

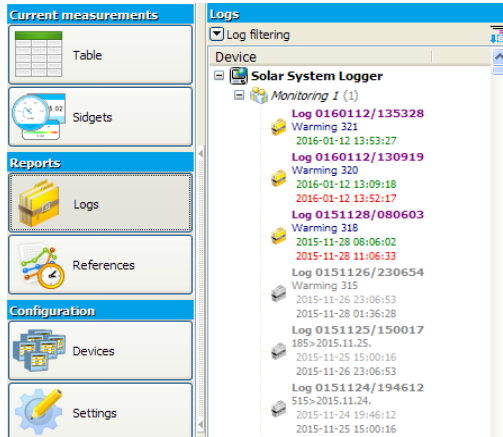


Figure 7.1. Log list with full and partial information

When starting the program, **DAQ Manager** before caching checks the number of logs that will be processed. If this number exceeds 500, e.g. as a result of an excessive increase in the value of the parameter **Number of closed logs to cache** or having too many devices, the program will display a warning (7.2).

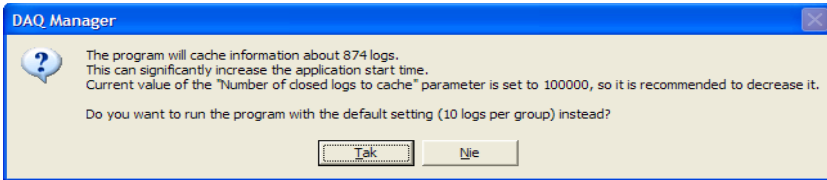


Figure 7.2. A warning about a possible extension of the program startup

If it is necessary to cache a greater number of logs at a time than specified by the **Number of closed logs to cache** parameter, it is possible to manually cache the next logs group using the button presented in 7.3.

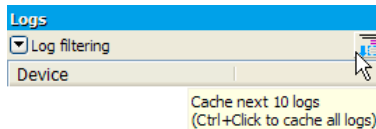


Figure 7.3. Button for manual caching of the next logs group



Used in the program logs caching system is a result of changes in the device firmware. In newer versions of MultiCon device firmware it is possible to create a new log files in a simplified way, where triggering can be done manually using a dedicated button or automatically as a result of changing a specific value in one of the logical channels. This functionality means that the number of log files generated by these devices can increase drastically, which could definitely have a negative impact on the convenience of using the **DAQ Manager** program. Caching only a number of recent registrations solves this problem.

7.2. SEARCHING A LOGS

The program has been equipped with the function of searching for log files that may contain measurements of interest to the user. Access to this function is via the **Log filtering** panel in the device list in the **[Registrations]** section (7.4).

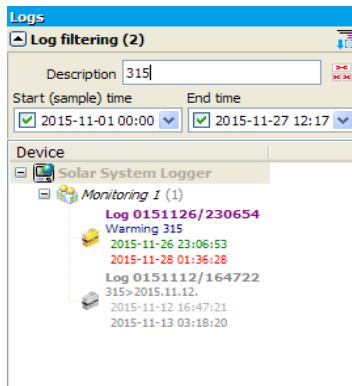


Figure 7.4. Searching through log filtering

Searching the logs takes place by using a filter that limits the list to one that meets the criteria specified by the user. Here the user can view the logs that may contain the data from the selected time range. Additionally, if the user knows a part of the description of the logs that interests him, can fill in the **Description** field.



Description field operates on the basis of regular expression search. In the simplest application, just enter a piece of text that may appear in the registration description, that is, each character entered means one occurrence of itself. User can also enter special characters, such as "." (dot), which means any character or previous character modifiers like e.g. "+" (plus), which means that the preceding character must occur not exactly once, but at least once. Regular expression syntax follows the standard PCRE (*ang. Perl Compatible Regular Expressions*), more information about the syntax can be obtained from <https://www.regular-expressions.info/>.

7.3. SELECTION OF TIME RANGE

By selecting desired log in the **device list**, the program sets internal time intervals, computing data volume and automatically selects the last 3000 samples for displaying.

Automatic selection of the last 3000 samples may be blocked. This is useful if the user change the log, for example, select one from a different group. It doesn't have to re-select the time range that it was interested in the previous log. To lock the selected time range, the user must check the "Don't change selected time range, if you choose another log" which is located in the center of the time line (7.6). In the center of time area there is also the **[Omit samples mode]** button, which is described in the section 6.2.

The time range can be also defined manually by typing selected dates, or less accurate but faster, using the time line.

Blue on the time line means there is no measurement data.

Gray indicates that during this period there is some measurement data, but is not selected to be included in the report. The measurement data are grouped into files which are parts of the log. Each of these parts has its own number and contains information about the time range of the recorded data (7.5)

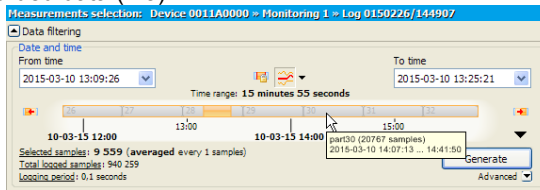


Figure 7.5. The division of registered data to parts

If any part is missing, then in its place will be the blue color.

Orange means that the report will be generated just from this time range. The orange range can be freely modified by using the mouse (7.6).

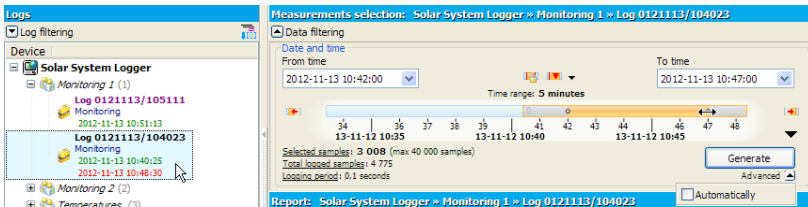


Figure 7.6. Choice of time range

On the left and right side of the time line there are buttons that allows you to move the specific time period forward or backward. Changing the viewable region of the time line (7.7.a) and automatic selection of the time range of the last measurements (7.7.b) are available from the context menu of the time line or down-arrow icon.

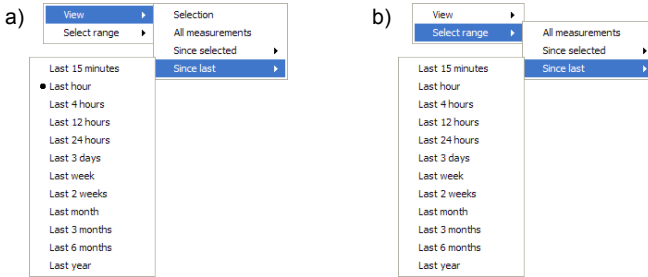


Figure 7.7. Contents of the context menu of the time line:
 a) choice one of the predefined views
 b) choice one of the predefined time ranges

With the rapid change of the visibility range of the time line, the user can easily switch between different views and find the last selected time range.

In for easier choice of the time range in which the data were recorded the timeline displays markers indicating the timestamps of startup (green) and shutdown (red) of the device (7.8).

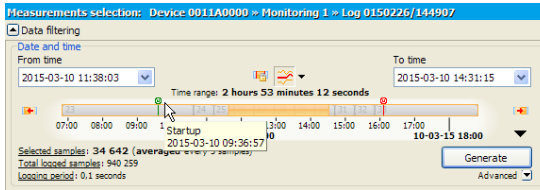


Figure 7.8. Information about startups and shutdowns the device

This information provides the device with firmware version starting from 4.03.1.



If there are two green markers one by one, it could mean that between each startup the device was not properly closed, and it may be the reason of errors occurring in the recorded data.

After select a time range, user can generate the report as a table or a graph by clicking on the **[Generate]** button or double-click on any log on the **devices list**.

DAQ Manager allows the user to show in the graph area a special mark (red line) that indicates the time difference of the first (last) generated sample relative to the begin (end) of a user-selected time range (7.9).

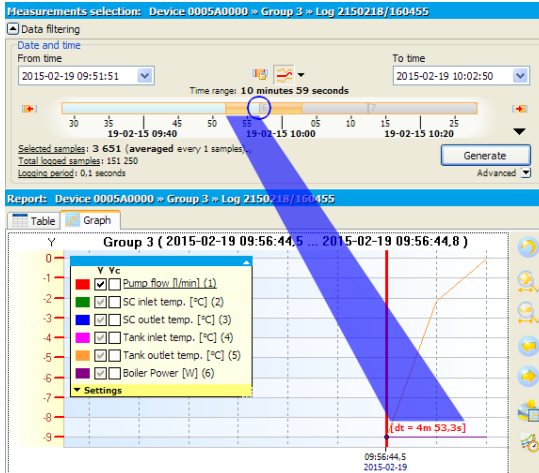


Figure 7.9. The difference of the start and end of data relative to selected time range

7.4. AUTOMATIC REPORT REFRESH

Generation of the report can be done in an automatic way each time, when the program receive new data for the unclosed log.

To use this feature, select on the **device list** one in progress log (unclosed). Then select the period of the time for this log that will be moved at the end of data download process, then expand **Advanced** options, which are located under the **[Generate]** button and check **Automatically** option (7.6).

For example, if the user specifies the time range on the time line from 2012-01-02 10:15:17 to 2012-01-02 11:15:17, this means that the period of time is 1 hour. This one hour period is used for the calculation of the new beginning and the end of time selection, if there is new data.

Automatic report generation is triggered each time when the process of downloading data from the device via the network interface will be complete. Downloading data from the device can be initiated by the user or by shedule of automatic data downloading (see section 4.4).

Automatic report refresh function combined with automatic data downloading is especially useful in applications where it is necessary to periodic monitoring the recorded data.

7.5. THE TABLE

7.5.1. General information

The created table consists of columns with measure number counted from the time of activation of the log, sample time (time stamp) and the data values of particular channels (7.10).

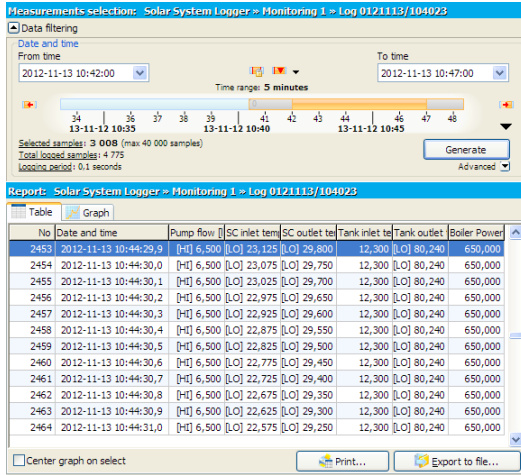


Figure 7.10. Create a report as a table

If the value in the channel exceeds **Low Value** or **High Value** specified in the settings of the selected channel (5.6), then in the table displays “[LO]” or “[HI]” beside the value. However, if the channel has the setting **Display Format** as **Binary**, then instead of real value, a label is displayed (defined by **Label ON / OFF** settings), where **Label ON** is accepted for values greater than 0.



By pressing the **[Export to file ...]** button you can save the table as a CSV file which can then be opened with any spreadsheet program. After each export **DAQ Manager** suggests to open the file in the default program.

7.5.2. Synchronization with the graph

Together with a table with measurements is generated the corresponding graph. Changing the highlight of the active row in the table will automatically highlight the corresponding data points on the graph (7.11).

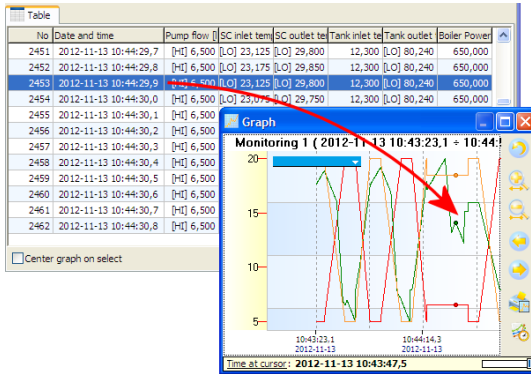


Figure 7.11. Highlighting the graph points using the table

Active row in the table can be changed by mouse clicks, mouse whell rotation, scroll bars and the keyboard using arrow keys, PageUp/PageDown and Home/End.

Checking the option "Center graph on select" results, that the change of the active row in the table move the graph so that the measuring points remain in the center of the plot area. Checking this option is useful when the highlighted points would go outside of the viewing area due to zoom in a portion of the graph.

7.6. THE GRAPH

Along with the table, you can create a graph with all logged channels (7.12).

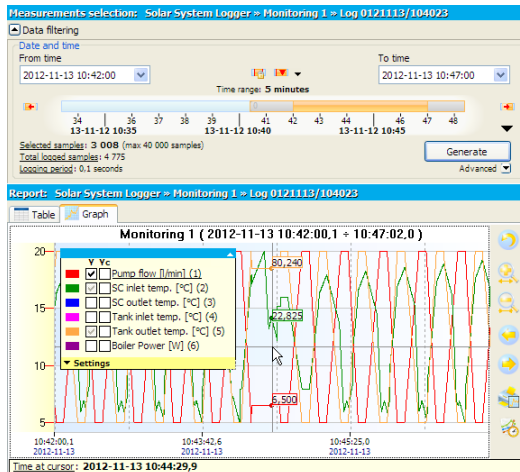


Figure 7.12. Create a report as a graph

7.6.1. The legend

The legend of the graph is interactive and allows you to select channels to show and adjust their settings.

Each channel contains two checkboxes labeled **Y** and **Yc**, which relate to two axes of the graph, the left and right respectively (Figure 7.6). Checkbox labeled **Y** can be in one of three display states according to the following table.

Setting	Action Description
<input checked="" type="checkbox"/>	The channel is active. The graph and the Y -axis are displayed.
<input checked="" type="checkbox"/>	The channel is active. The graph is displayed, but not the Y -axis
<input type="checkbox"/>	Channel is inactive. The graph, Y -axis and notes of the data points are not displayed. Channel won't be included on printout, at copying and saving the graph as a graphic file and to create a reference.

Change displaying state of the channel can be done by clicking on it or using the context menu.

Moving the cursor over one of the channels on the legend causes set automatically the grid and Y-axis for this channel. To display more than one Y-axis, uncheck the option **Auto choose right Y-axis**, which is located in the legend **Settings**.

To feature visually one of the channels on the background of the others, it may be helpful to activate the **Highlight selected channel** option. Use this option carefully, because too much data can drastically slow down plotting the graphs.

Checkboxes labeled **Yc** assigned to each channel are bistrate. Checking this box will cause that selected channel will be added to the common **Yc** axis on the right side of the graph. Adding each next channel to this axis, will automatically scale all graphs which are already there to proper display each of them (7.13).

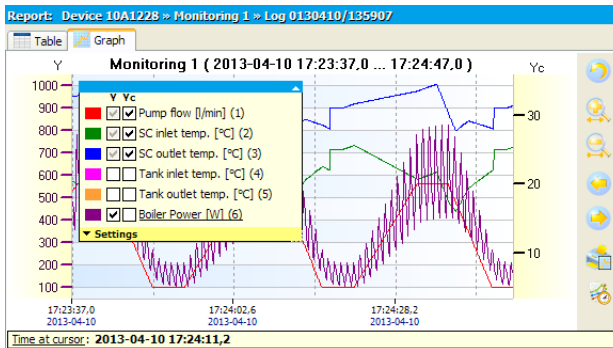


Figure 7.13. Adding selected channels to the common **Yc** axis

Clicking on labels **Y** or **Yc** located in the top of legend will automatically switch states of

all checkboxes in the selected column. This allows to quick change displaying state of all channels on the selected axis.

Clicking **Settings** label causes opening menu with additional graph settings (7.14). There is possibility to choose following options:

- 1) Show background grid – turns on and off grind on the graph,
- 2) Auto choose right Y-axis – allows to automatically switch Y-axis depending on selected in the legend logical channel,
- 3) Highlight selected channel – allows to highlight on graph selected in the legend logical channel,
- 4) Quick selected channel – when this option is on, the program will remove from its internal memory all logical channels which are not selected in the legend which allows to free memory for other programs. When this option is selected, logical channels are only hidden and can be displayed much quicker, but still they will be in memory,
- 5) Show breaks – allows to display breaks in logging as a vertical lines on graph,

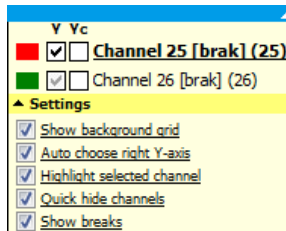


Figure 7.14. View of **Settings** menu

7.6.2. Scaling and moving

The scale of the graph can be changed by clicking on the time axis or the value axis and dragging it horizontally or vertically.

In addition, the scale of the time axis can also be changed by pressing the **[Zoom In]** or **[Zoom Out]** buttons. A similar effect can be obtained by pointing your mouse any location in the graph and while holding down CTRL key, rotate the mouse wheel.

The last method, which allows you to zoom in a portion of the graph is scaling using a window selection. To do this, click the right mouse button in the upper left portion of the graph, that you want to zoom in, then drag the selection in the direction of bottom right corner of the chosen portion.

The default scale of both axes can be obtained using the **[Reset view]** button.

The graph can be moved by clicking on the graph and dragging it by mouse horizontally or vertically.

In addition, the graph can be moved horizontally by pressing **[Move Left]** or **[Move Right]** buttons or by mouse wheel.

7.6.3. Synchronization with the table

To find in the table the location of pointed samples in the graph, click the left mouse button at the desired graph location. This action will change the active row in the table to the proper for the pointed measurement (7.15).

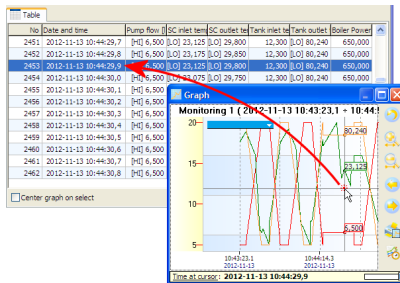


Figure 7.15. Changing the active row of the table by the graph

If the graph window is docked, the effect may not be visible. To immediately display the table with the active row, please hold the CTRL key during click.



Synchronization doesn't applicable to reference graphs.

7.6.4. Transfer to other programs

For easier transfer different views of graphs to the outer programs, **DAQ Manager** comes with two useful functions for this purpose.

The first one is a feature to copy to the clipboard the current graph view as a bitmap. It is accessed from the context menu of the graph.

The second feature of the program allows you to save the current graph view as a raster file in one of three formats: PNG, BMP and JPG. This function is also located in the context menu of the graph.

Dimensions of the image created by these functions correspond to the dimensions of currently displayed graph.

8. CREATING REPORTS

8.1. PRINTING THE TABLE

After generating data from selected time range, the user can print the table by clicking on the **[Print...]** button at the bottom of the **Table** tab (8.1). This command will display a printer selection window, if there is more than one installed on the system.

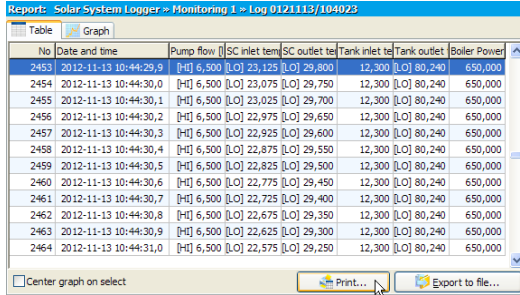


Figure 8.1. Print the table



If the printer driver can't preview pages before printing, it is worth thinking of installing a virtual PDF printer in order to be able to view the printed copy and prevent printing too many incorrect pages. With a large number of measurements printout may consume more than 1300 pages (100,000 measurements, A4, 76 measurements per page).

8.2. PRINTING THE GRAPH

The graph view specified by the user can be printed using the **[Print Graph...]** button (8.2).

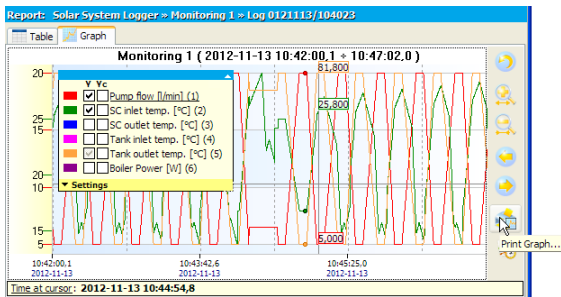


Figure 8.2. Print the graph – individual scales for visible channels

On the printout, there will be visible only scales of the Y-axis selected by the user and this is consistent with the current view.

If the data of several channels have similar values, then before you print, it may be helpful to change the method of the Y-axis scaling in such a way that the scale will be common to all channels. This can be done by selecting the **Common scale for all channels** in the selected log, accessible from the **[Devices]** side menu (8.3)

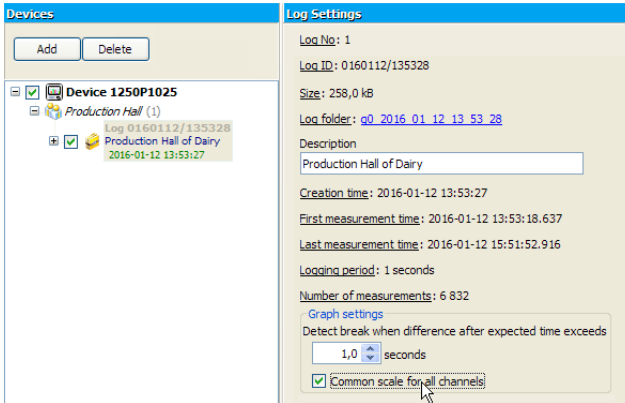


Figure 8.3. Enabling a common scale for all channels in selected log

When you select this option, the scale of the Y-axis will be common for the checked channels (8.4).

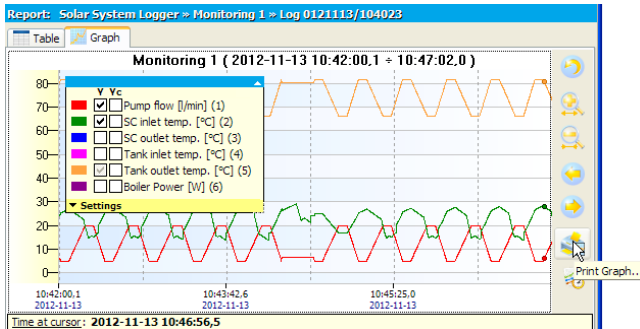


Figure 8.4. Print the graph – common scale for visible channels

If the legend on the printout covers an important part of the graph, its position can be changed before printing by moving the active legend on the screen. Upper left corner of active legend indicates a position of anchoring the legend visible on the printout.

9. ANNOTATING GRAPHS

DAQ Manager allows to add annotations on the graph to the selected points. Annotations in the form of notes can be helpful to mark significant events of the recorded process. In the case of reference graphs annotations can be useful for marking reference points or placing other information. Notes can be in the many form of user-defined styles, which often helps the visual interpretation of information (9.1).

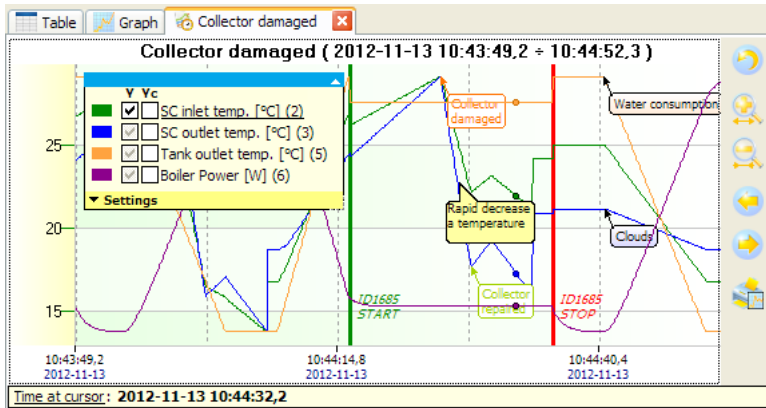


Figure 9.1. Notes in many styles define various types of information

9.1. CREATING NOTES

User can add a note to the graph using the **[Add note...]** command from the context menu. This will show the **Add note** window (9.2).

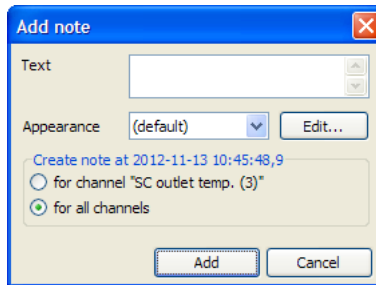


Figure 9.2. The window of adding a note

If the place of call the context menu were outside the points area belonging to one of the channels, the window will automatically set to add note as an anchor for all channels. If in the moment of call the context menu the mouse pointer was in area of the points of the selected channel, this channel is automatically set as the anchor for note. The place of anchor the note in the **Add note** window can be changed between the nearest channel and all channels.

Enter any text in the **Text** field and click on the **[Add]** button to create a note for the selected point of the graph.

Leaving the **Appearance** field in the default setting will cause the appearance of the note will be adjusted for maximum readability with automatic background color of channel.

9.2. CREATING TYPES OF NOTES

During creating or editing a note, the program allows to choose the appearance of the note. A list of appearances can be customized to individual needs and that way specify different types of information placed on the graph. To edit this list of appearances, click on the **[Edit...]** button in the window of adding a note (9.2) or edit a note (9.4). You will see the **Notes Appearance Editor** shown in 9.3.

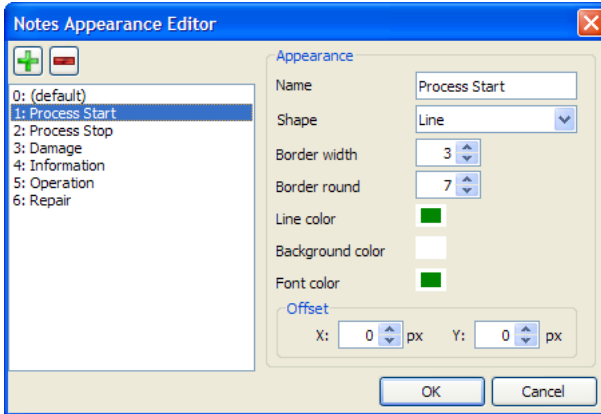


Figure 9.3. Notes Appearance Editor

The user have here the possibility to define any number of different-looking types of notes. Each type has its own identifier in the form of a number and a name. The number is chosen automatically and is connected with notes. The names of the notes can be duplicated.

Appearances types of notes are global for the entire program. This means that, once defined, may be used in different graphs, both which relate to logs and references.



If the user have already added to his graphs some notes with pre-defined appearance and next removed this appearance, these notes will be displayed on the graph in default way.

9.3. EDIT AND DELETE NOTES

To change the parameters of the previously created note, run the edit window (9.4).

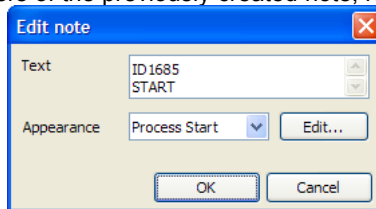


Figure 9.4. The window of editing the note

This can be done by clicking left mouse button on the note. The user can also point by cursor the location of graph point to which the note is anchored, and then choose **[Edit note...]** from the context menu. If the mouse pointer will be near the points of plots and at this point is defined a note for all channels, then this note can be edited from the context menu.

To remove a note defined for one channel, point this note or plot point where it occurs and click **[Delete note]** command from the context menu.

To remove a note defined for all channels, point this note or area where it occurs and click **[Delete note]** command from the context menu.

10. REFERENCES

The program allows to create independent sets of data from selected parts of the logs. These new data sets, called references can then be viewed in the form of graphs. Way to navigate through the reference graph and most operations are similar to graph known from the data generated from log (see section 7.6).

10.1. GENERAL INFORMATION

The user can create references to save part of the log, which will provide a record of the process under ideal or extreme conditions. The graph of this part can be used many times for visual comparison of the same process at different times using the graph generated directly from log or other reference.

Because for each reference user can define an individual name and a detailed description and the time range is constant, it can be created to extract especially interesting fragments of the log for quick access. If we need to display data directly from the source log, that based on the information window of reference we can check where it came from. Notes created for the reference don't affect the source log. Such references can be used to quick reporting or exchange the data between **DAQ Manager** programs.



Each reference is a comprehensive data set in a single file that contains, apart from measurement data, also all information and settings required for the proper display it in the program. Reference files are located in the "refs" subdirectory which is located in the installation directory. Inside it there are files with names like "ref_*.db". **DAQ Manager** during startup scans this directory to update list of references. It makes easy to distribute these files between programs.

10.2. CREATING REFERENCES

Creating a new reference is as follows. First, user should generate a table and a graph of data based on any log with an interesting range of time. Then zoom in part of the graph, from which the reference will be created and disable unnecessary channels. After these operations, the source graph is ready to create a reference. Reference can be create by clicking the **[Create reference]** button (10.1).

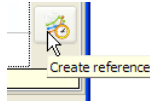


Figure 10.1. Creation of a reference

After that, it displays the **Create reference** window (10.2).

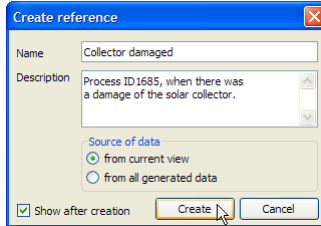


Figure 10.2. The **Create reference** window

In this window, the user can give the name and description of reference and specify manner of retrieve the source data. Checking the **Show after creation** option will automatically display the graph after copying the data.

Each reference graph appears as a new tab to the right of the **Graph** tab (10.3).

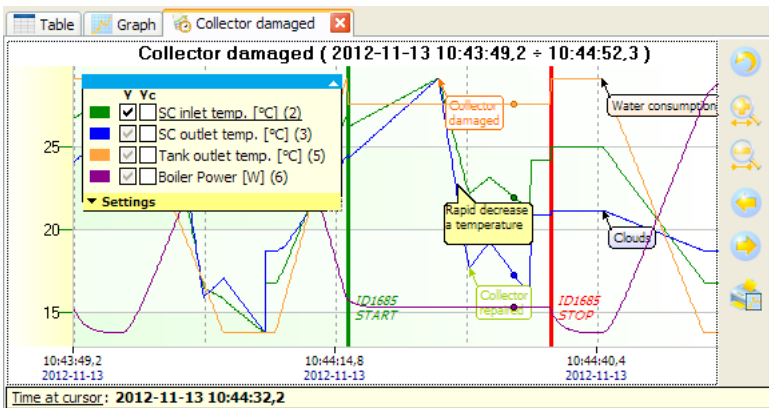


Figure 10.3. Example of opened reference graph

The reference graph contains only selected channels and defined data range. Were also copied all notes for selected channels that were in the source log.

The tab of reference graph is identified by a special icon and can be closed at any time. Closing the tab means freeing memory with the resources used by reference. Re-opening any reference is possible from the list of references (see section 10.3).

10.3. LIST OF REFERENCES

Access to the list of references is possible from the side menu under the **References** position (10.4).

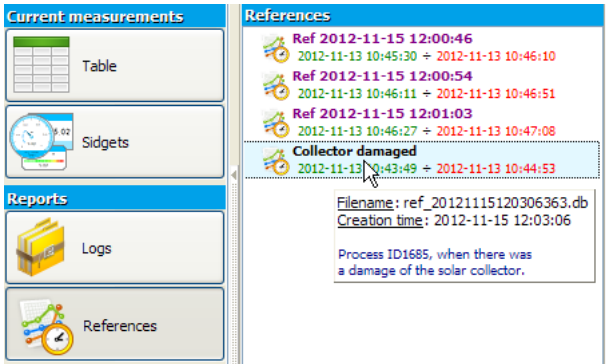


Figure 10.4. List of references

This list is automatically updated with each new reference the user will create using the program or manually upload it to the "refs" directory (see section 10.1).

The name and description for each reference in the list can be changed at any time from the context menu of the list. From the same menu the selected reference can be deleted.

To identify the source of reference or obtain information about the selected data set, click the **[Information]** command from the context menu.

To show the graph of selected reference, double-click or invoke the **[Show]** command from the context menu of the list. Amount of simultaneously opened reference graphs is arbitrary and limited only by free RAM memory of the PC.

10.4. COMPARING GRAPHS

The primary function of the reference graphs is able to refer to these the recorded graph shapes of the similar or the same process and in a different period of time. Such comparison allows to capture especially important changes affecting the entire process.

Opening several reference graphs at the same time allows to quickly switch between tabs.

Each tab with the the graph can be undocked and displayed as independent window. Arrangement these windows next to each other can view a few graphs from many different sources on a single screen (10.5).

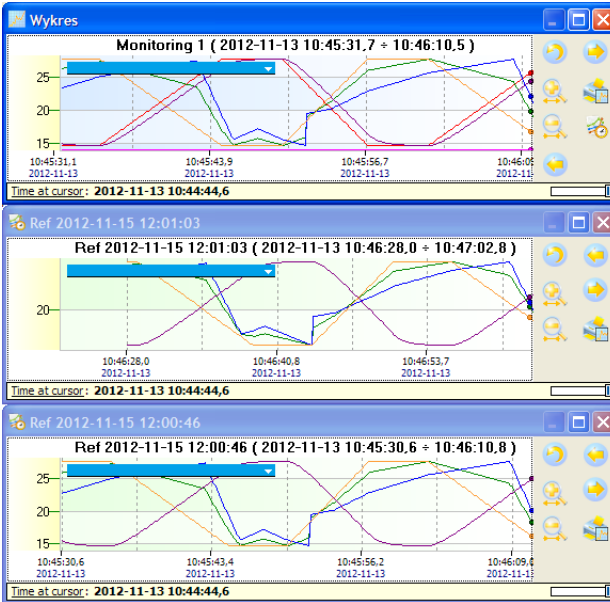


Figure 10.5. Comparing charts from many different sources

To capture more subtle differences between the graphs, the **Graph** window can be overlapped of the selected window with reference and by changing the level of top window transparency, expose differences in the plots. To control the level of transparency of the window use a slider, which is located in the lower right corner of the graph (10.6).

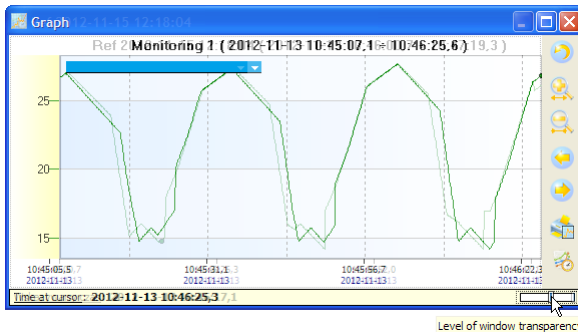


Figure 10.6. Change the transparency level of the graph window

Closing the window with the graph will dock it as a tab. If this is a reference window, then holding down the CTRL key while it is closed, it will close and release the resources of this reference.

11. CURRENT MEASUREMENTS

DAQ Manager allows you to view current measurements using an Ethernet network connection. Users have two options for previewing data. Current measurements can be displayed in the form of a channels oriented table on the device or in graphical form as a pre-prepared HTML page with Sidgets oriented on individual channels of the device.



The device, which will be a source for current measurements must be equipped with ACM module, which enables connection to Ethernet network.

11.1. THE TABLE

Access to the table with current measurements is possible by clicking on the **Table** item in **Current measurements** section. There are tabs for each device that has properly configured settings for network connections and the ability to view current measurements is set to active (11.1).

No	Channel name	Channel type	Unit	Value	Average	Min	Max
1	Pump flow	Math function	l/min	14,0	12,2	5,0	20,0
2	SC inlet temp.	Math function	°C	20,5	22,4	14,0	27,8
3	SC outlet temp.	Math function	°C	30,7	31,6	26,7	
4	Tank inlet temp.	Set point value	°C	12,3	12,3	12,3	
5	Tank outlet temp.	Math function	°C	72,4	74,3	66,2	81,8
6	Boiler Power	Math function	W	1591	1233	503	1999
7	Boiler Temp.	Set point value	°C	85,0	85,0	85,0	85,0
8	Water flow	Profile/timer	l/min	29,3	24,1	0,0	50,0
9	Pump Power	Math function	W	90	82	51	116
10	SUN	Profile/timer	°C	35,6	36,3	32,1	40,0
11	Clock bin	Hardware input	--	ON	--	OFF	ON
12	Sun_trigger	Hardware input	--	0	0	0	0
58	US 6	Math function	--	1379	1222	500	2000
59	US 2	Math function	--	-15	-14	-18	-10
60	US 3	Math function	--	-5	-5	-6	-4

Figure 11.1. Table with current measurements

If there is no a tab for the device, which measurements we want to track, then you should go into your device settings, check the **Current measurements** option (11.2) and save settings.

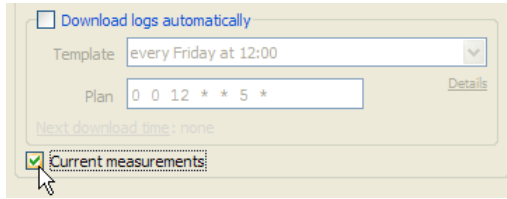


Figure 11.2. Activation of current measurements

The polling interval of devices for new measurements is adjustable in the program settings on the **Current measurements** tab (section 6.4).

Current measurements mode allows you to preview the basic parameters of channels such as channel name, type and the current measured value with set unit. It also calculates the average of the measurements which occurred after the last buffer reset. For minimum and maximum values is also stored with the time of their occurrence, which can be displayed by moving the mouse cursor over the desired value.

All values displayed in the table may be marked according to the following table:

Colour	Event Description
blue	A value in the table is below the graph low value, which was set in the device.
red	A value in the table is above the graph high value, which was set in the device.

Access to the settings of the graph thresholds for selected channel is possible from the MultiCon device as follows:

MENU > Device configuration > Input channels > Displaying
 > Graph low
 > Graph high

If the display format is set to “binary”, then in the table the user will see the label corresponding to the value of the channel.

The **[Measure]** button is used to take recent data from the device without waiting for automatic read.

11.2. SIDGETS

The **Sidgets** have been designed to read current measurements from each channel of selected device. They allow visualize the current measurements in a various type of graphical indicators. It is a SCADA type solution and allows monitoring of entire system via Internet using any Web browser as a HTML page. It is a very flexible solution that can be adapted in to your needs.

Sidget engine has been added to the version 5.07 of MultiCon firmware. To use this technology, it is recommended to update your MultiCon firmware to the latest version.

The tutorial of creating visualizations using this technology can be found in a separate "MultiCon_Sidgets_*.pdf" document, which can be downloaded from the dedicated <https://www.multicon24.eu/sidgets> web page.

11.2.1. Access to the sidget web pages from the software

When you click on the **[Sidgets]** button in the **Current measurements** section, is displays the interface for managing web pages with sidgets (11.3). At the initial state, the list of pages contains only the "[Sidgets information page]" item. This is a web page contains basic information about this technology. After designing your own Web page you can add it to the program by entering the correct URL address or a path to a local file. Paths to local files can be freely specified but you can use the special location of the **DAQ Manager** - "UserWebpages" subdirectory, which is located in the program installation directory. Paths to this directory can be declared as relative, so this allows for easy transfer all pages in the future to a new installation directory.

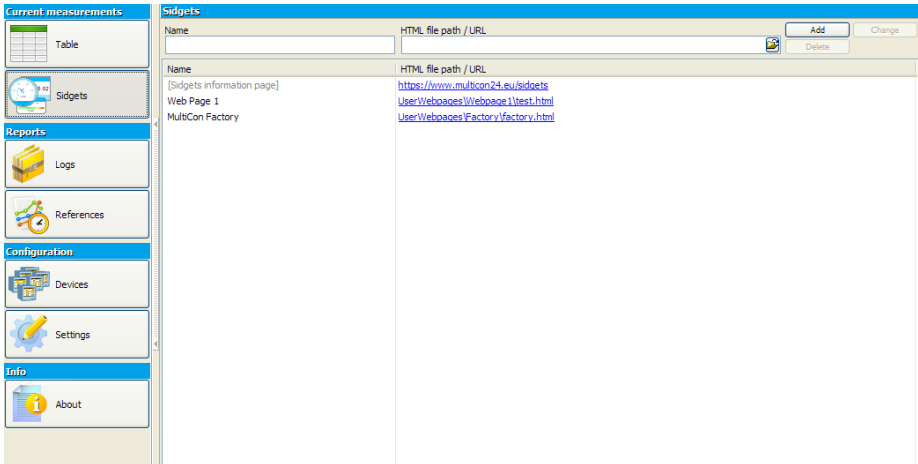
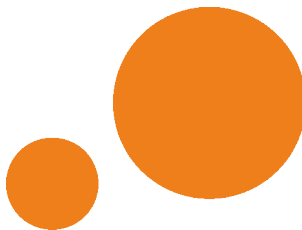


Figure 11.3. The interface for managing pages with sidgets

System requirements:

- Operating system: Windows XP (32-bit) or later
- processor Pentium/AMD 600 MHz or faster
- 2 GB of RAM or more
- 2 GB or more free disk space
- monitor with min. resolution SVGA (800x600)
- network card
- keyboard and pointing device (e.g. mouse)
- tested on: Windows® XP, Windows® Vista, Windows® 7, Windows® 8, Windows® 10



**SIMEX Sp. z o.o.
ul. Wielopole 11
80-556 Gdańsk
Poland**

**tel.: (+48 58) 762-07-77
fax: (+48 58) 762-07-70**

**<http://www.simex.pl>
e-mail: info@simex.pl**